



**MISSISSIPPI VALLEY DIVISION  
ST. LOUIS DISTRICT**

Phil Moser  
FUSRAP & Environmental Branch Chief  
USACE, St. Louis District



U.S. ARMY



US Army Corps  
of Engineers®

**FUSRAP**

# **FORMERLY UTILIZED SITES REMEDIAL ACTION PROGRAM**

## St. Louis Sites

**St. Louis Downtown Site (SLDS)**

**St. Louis Airport Site (SLAPS)**

**Latty Avenue Properties**

**St. Louis Airport Site Vicinity**

**Properties (SLAPS VPs)**



# AGENDA

- Opening Remarks
- St. Louis Downtown Site
- St. Louis Airport Site
- Latty Avenue Properties
- St. Louis Airport Site Vicinity Properties
- Coldwater Creek Map
- Cades Cove Progress
- Group 12 West Progress
- Sampling at Group 12 East
- Wedgwood Subdivision Sampling
- FY 2027 Remediation Schedule



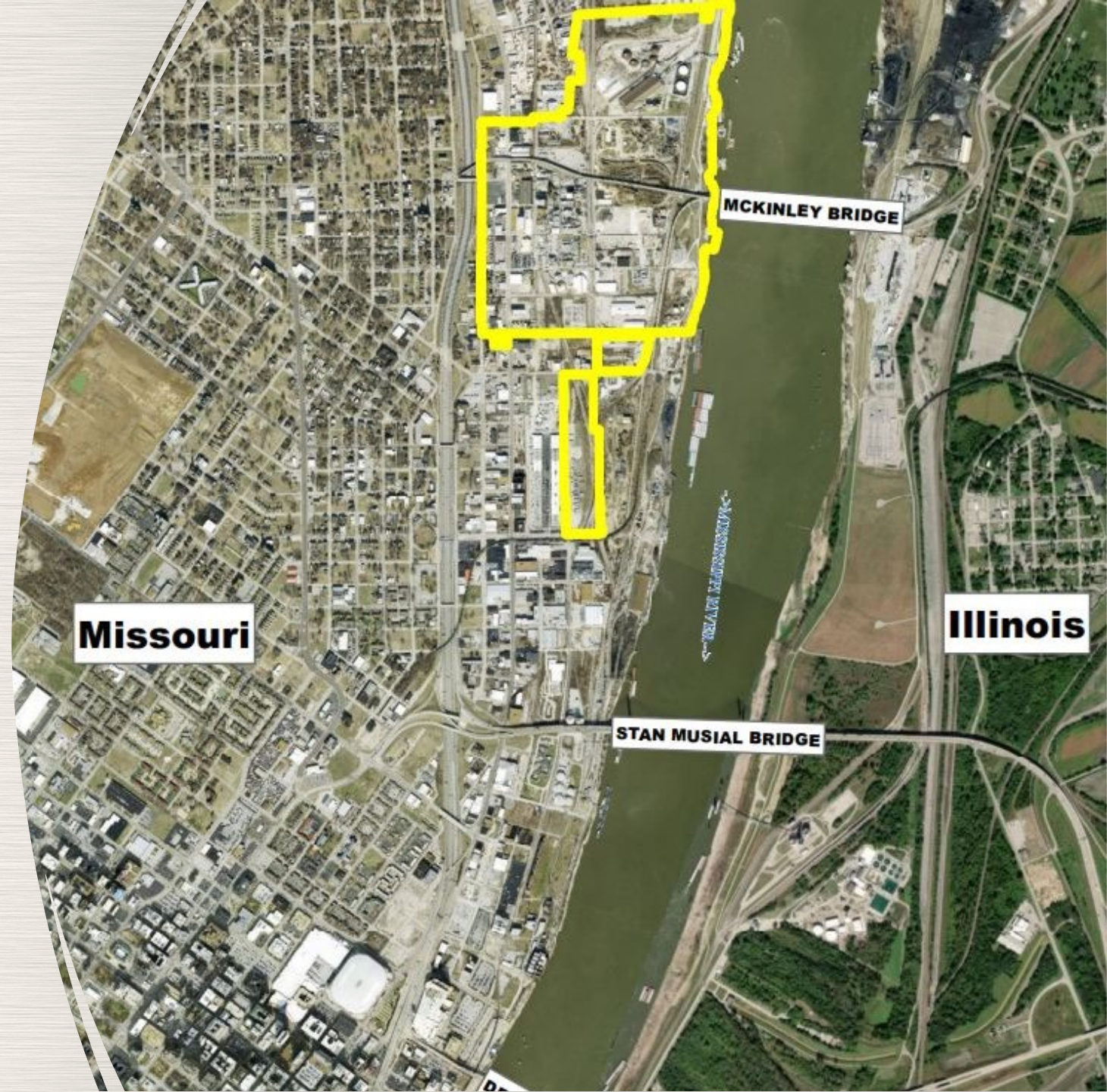
U.S. ARMY



US Army Corps  
of Engineers®



# ST. LOUIS DOWNTOWN SITE (SLDS)



U.S. ARMY



US Army Corps  
of Engineers®



# ST. LOUIS DOWNTOWN SITE (SLDS)

## Since 1997

- 349,209 cubic yards, that is about 4,207 rail cars
- 54 properties/areas released for beneficial use

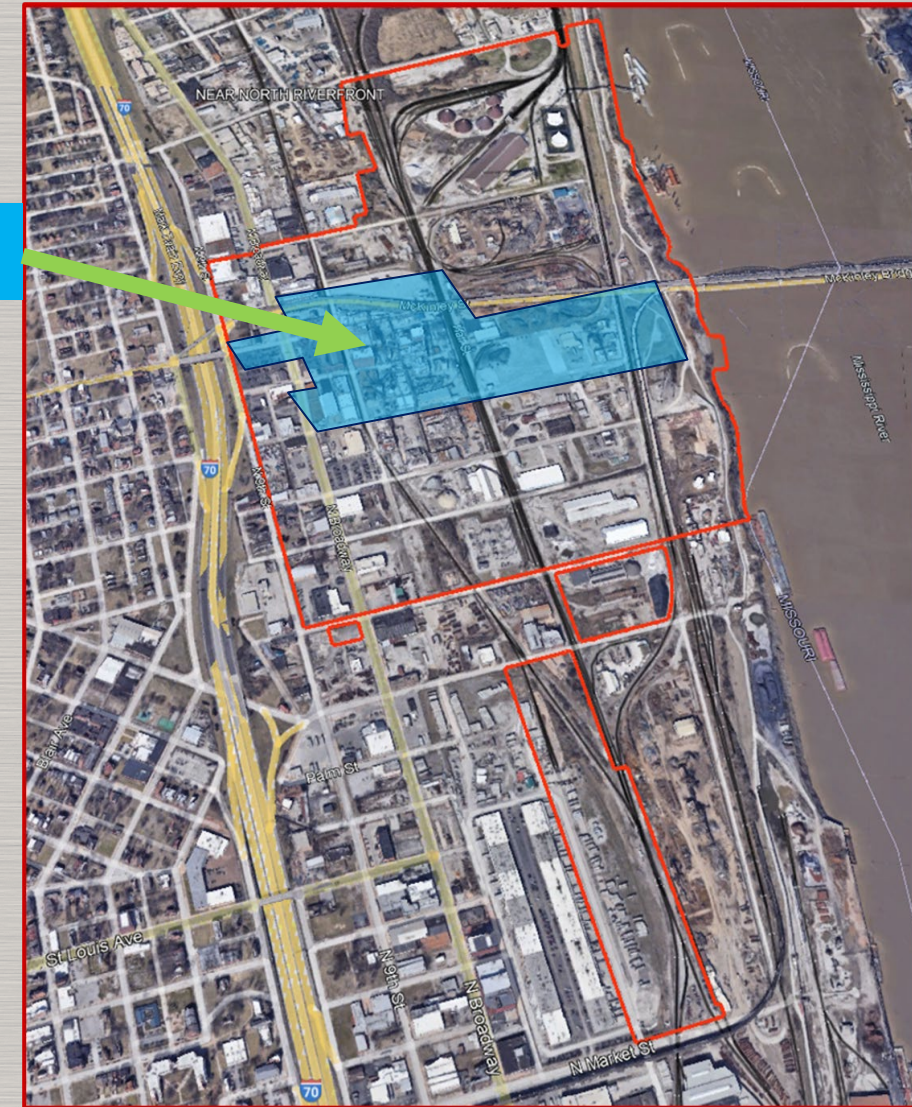
## This FY (Oct 2025 – Present)

- RA completed at:
  - MNK Plant 1 & 2 Data Gap Areas – In progress

General Area of Mallinckrodt  
Plants/Property



- MNK Former Bldg. 17 (NEXT)
- 499 CY disposed toward the 750 CY goal



US Army Corps  
of Engineers®



# ST. LOUIS AIRPORT SITE (SLAPS)

- 1997 - 2007: USACE remediated SLAPS.
  - Removed more than 620,000 cubic yards of contaminated soil and material (7,470 railcars).
  - Contaminated soil and material shipped offsite to out-of-state licensed disposal facility.
- Currently performing environmental monitoring (groundwater and air).
- North St. Louis County Sites loadout facility is located at the SLAPS. Maintains capacity for 35,000 cubic yards of contaminated soil.
- Provides base of operations for government and contractor personnel and a St. Louis FUSRAP dedicated onsite laboratory.



US Army Corps  
of Engineers®



# LATTY AVENUE PROPERTIES

- 2007- 2013: USACE remediated the Latty Avenue Properties.
  - Removed more than 227,000 cubic yards of contaminated soil (2,735 railcars) and decontaminated buildings at VPs 1L, 2L, and Futura.
  - Contaminated soil and material shipped offsite to out-of-state licensed disposal facility.
- Environmental monitoring is ongoing.
- Contaminated soils under the Futura Buildings will have Institutional Controls placed on them.
- Will be transferred to DOE-LM for long-term stewardship in 2029.



U.S. ARMY

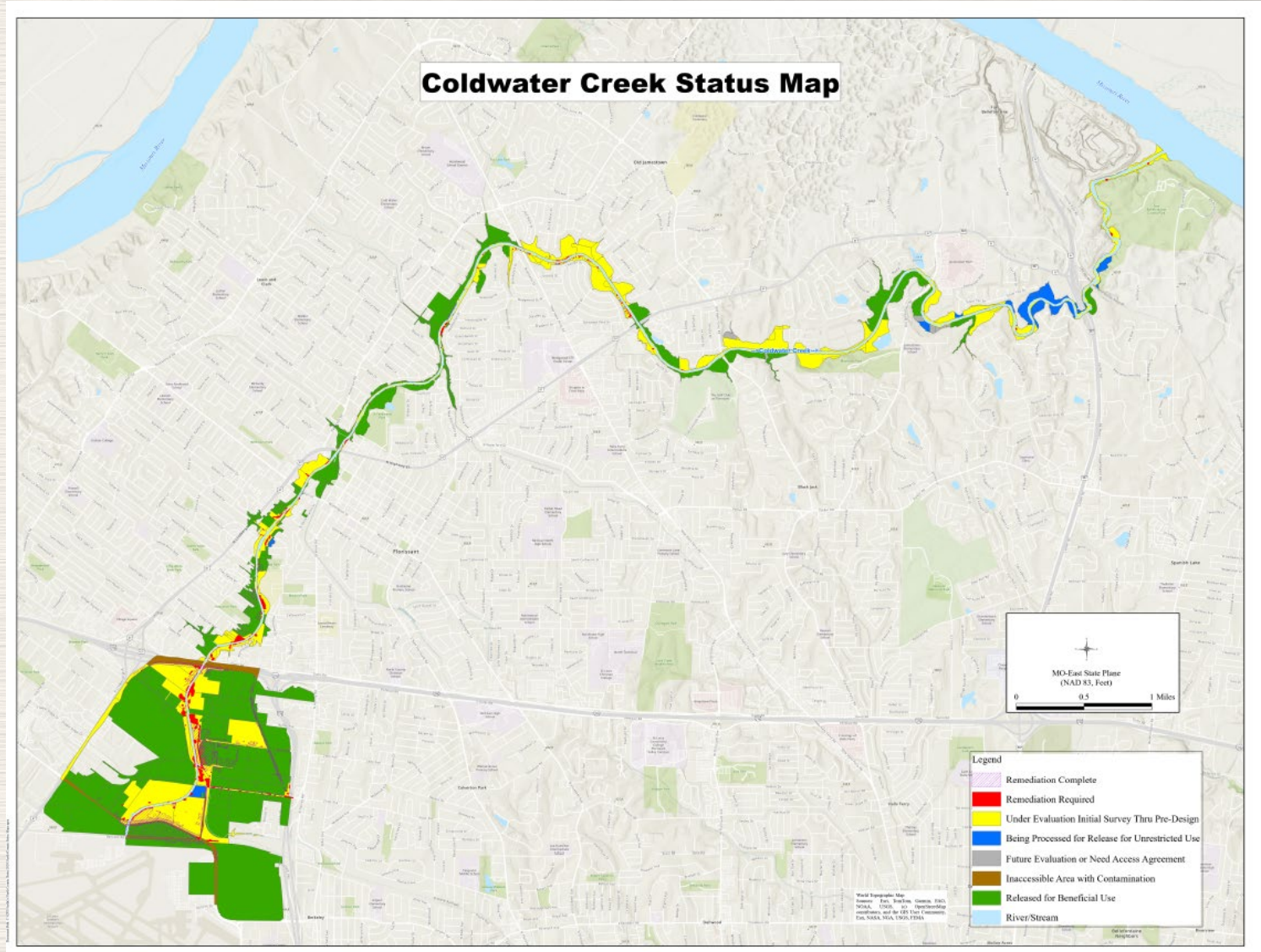


US Army Corps of Engineers®



# St. Louis Airport Site Vicinity Properties

- 2,200 acres of industrial, commercial, residential and recreational area
- 856 Vicinity Properties (VPs); 572 VPs returned for beneficial use
- More than 317,695 cubic yards of contaminated material shipped offsite to an out of state licensed disposal facility, active remediation is ongoing
- Coldwater Creek (CWC) is a Saint Louis Airport Site (SLAPS) VP that runs 14 miles from Banshee Road to the Missouri River



U.S. ARMY



US Army Corps  
of Engineers®



# SLAPS VPs – Coldwater Creek

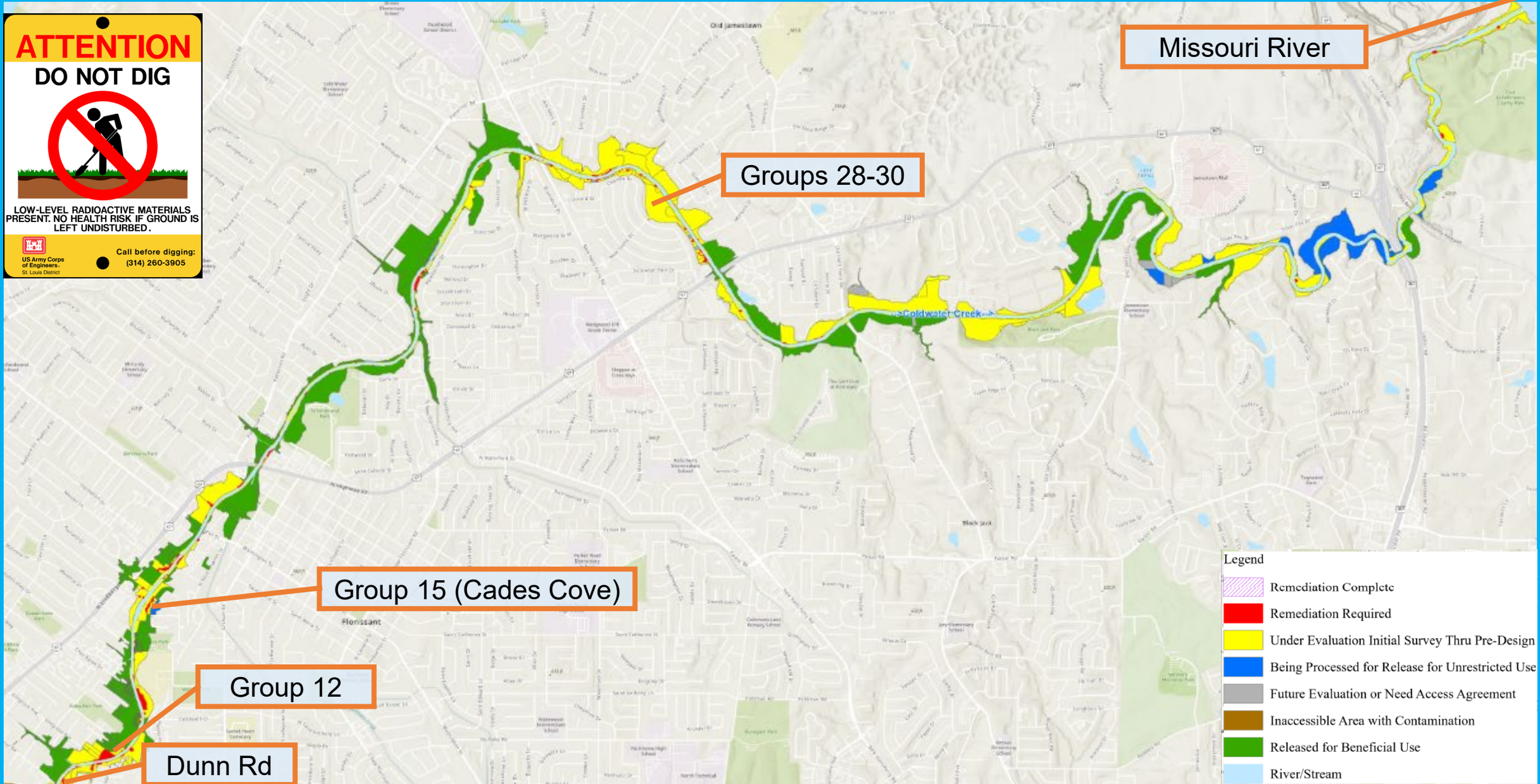
**ATTENTION**  
**DO NOT DIG**



LOW-LEVEL RADIOACTIVE MATERIALS  
PRESENT. NO HEALTH RISK IF GROUND IS  
LEFT UNDISTURBED.

Call before digging:  
(314) 260-3905

US Army Corps  
of Engineers  
St. Louis District



Missouri River

Groups 28-30

Group 15 (Cades Cove)

Group 12

Dunn Rd

- Legend
- Remediation Complete
  - Remediation Required
  - Under Evaluation Initial Survey Thru Pre-Design
  - Being Processed for Release for Unrestricted Use
  - Future Evaluation or Need Access Agreement
  - Inaccessible Area with Contamination
  - Released for Beneficial Use
  - River/Stream



# Cades Cove (Group 15) Progress

- Contaminated soil excavation began on 3/9/26 on the southern end of the area.
- Averaging about 26 loads a day which equals 260 cubic yards.
- Approximately 6,400 cubic yards removed to date.
- Clean Overburden- Approximately 6,309 cubic yards removed to date.



U.S. ARMY



US Army Corps  
of Engineers®



# Cades Cove (Group 15) Progress Photos



U.S. ARMY



US Army Corps of Engineers®



# Group 12 West Progress

- Remediation continues at the Group 12W properties south of St. Cin Park.
- Approximately 13,422 cubic yards have been removed to date.



U.S. ARMY



US Army Corps  
of Engineers®



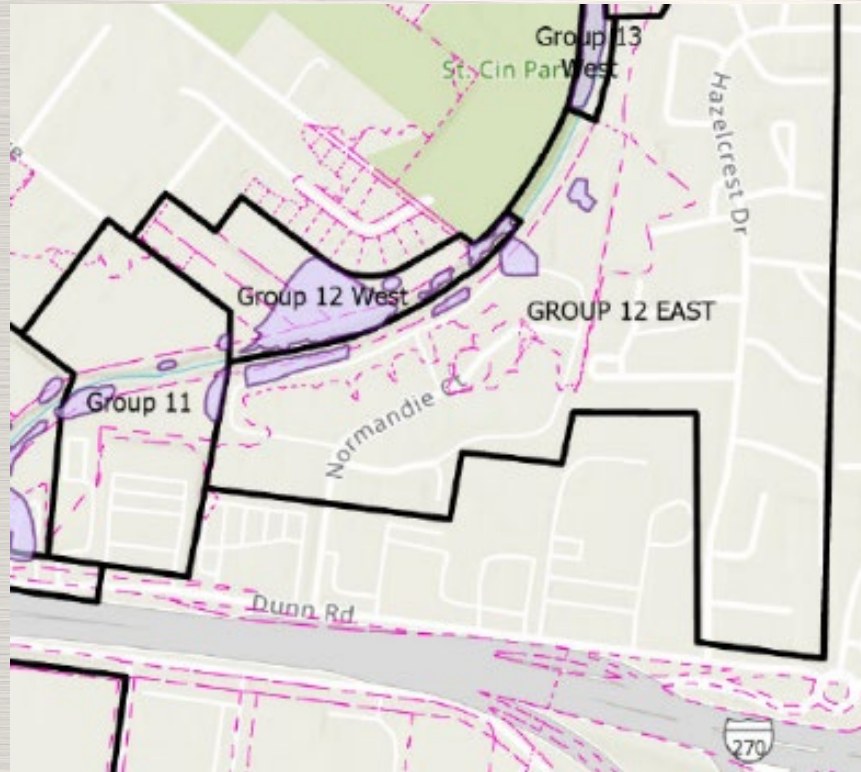
# Group 12 West Progress Photos



US Army Corps  
of Engineers®



# Sampling at Group 12 East



- Group 12 East is located at 7300 Normandie Court
- This area is the former French Quarter Apartment complex.
- Property owner is working with the City of Hazelwood to restore the area to green space.
- Recent sampling effort confirms that contaminated soil is under the clubhouse.
- Currently performing a Technical Evaluation to document best remedial action option.
  - To remove all contamination, the clubhouse will need to be demolished.
  - Property Manager has been notified.
- Area is tentatively scheduled for remediation in October 2026 after remediation is complete at Group 12 West.



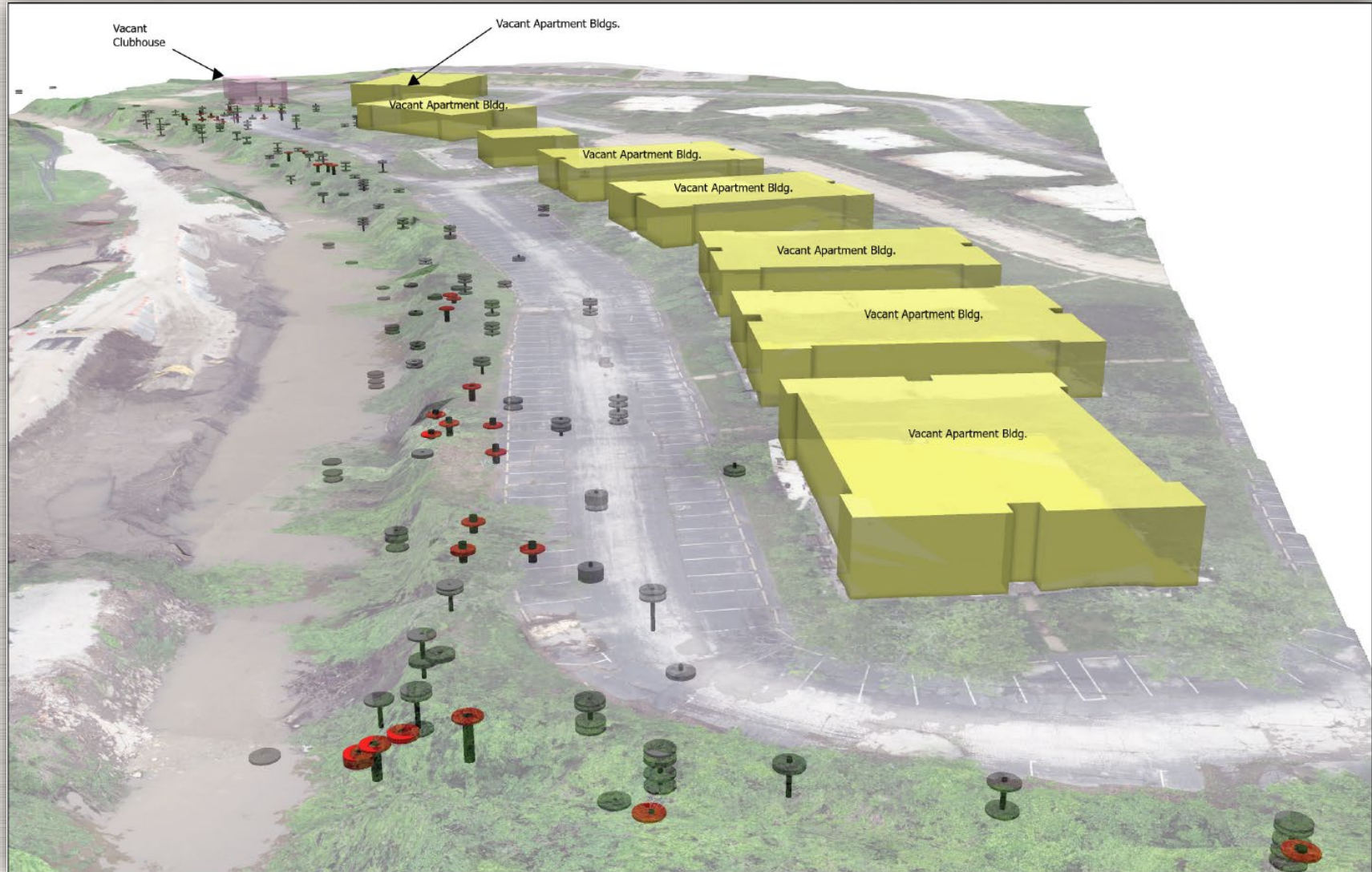
U.S. ARMY



US Army Corps  
of Engineers®



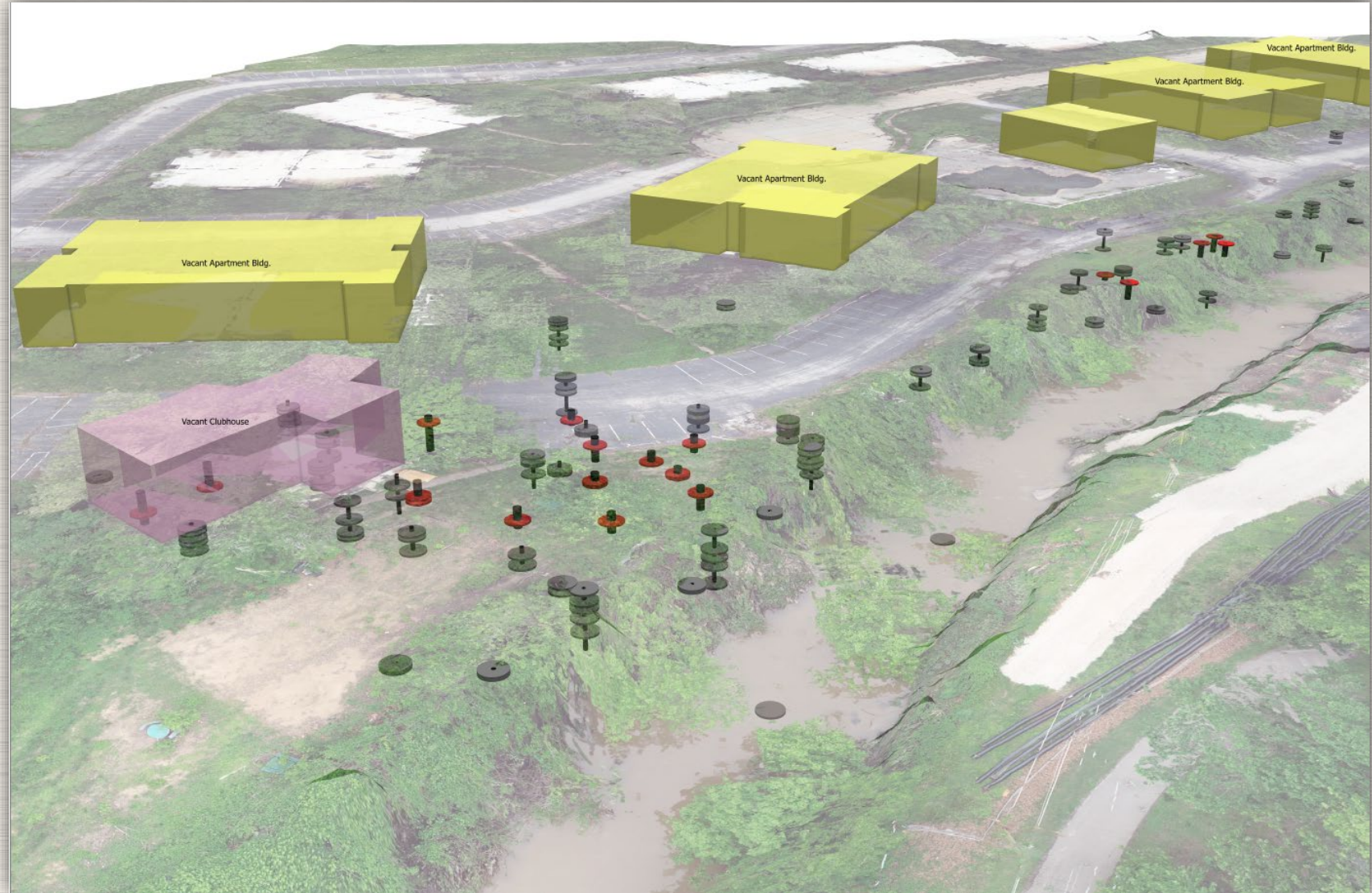
# Group 12 East 3D GIS View Looking North



US Army Corps  
of Engineers®



# Group 12 East 3D GIS View Looking South

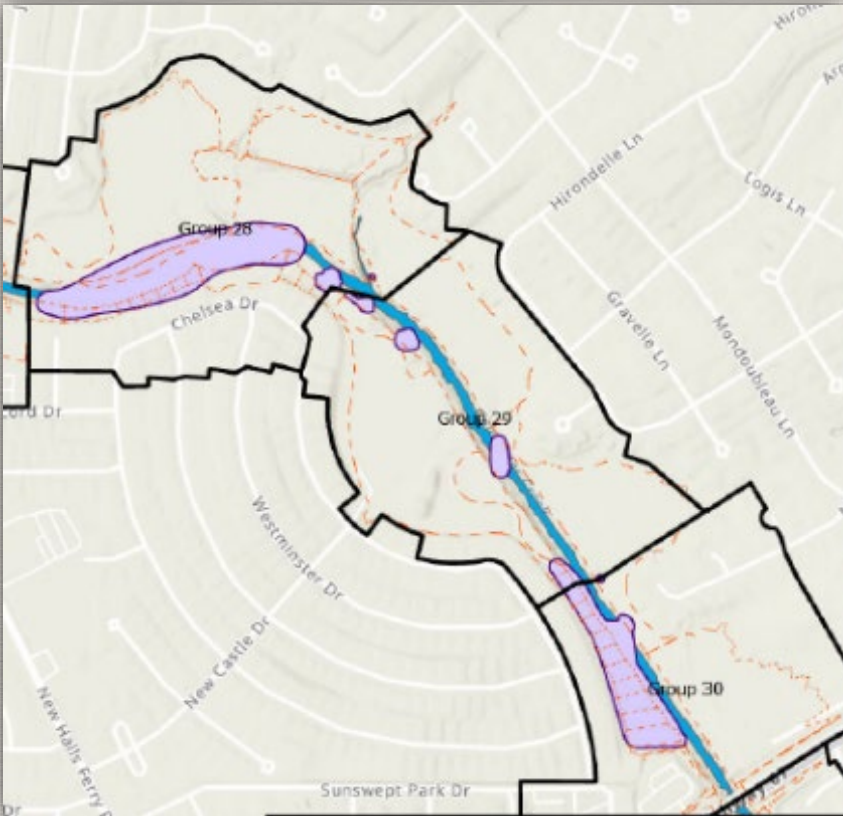


**US Army Corps  
of Engineers®**



# Wedgwood Subdivision Sampling

- Groups 28, 29, 30 Right Descending Side only
  - Total number of sample locations: 313
  - Additional sampling is conducted to better define area of contamination and further investigate any historical features (meanders and low areas)
  - Completed locations: 183 of the 211 available with current Rights of Entry (ROE)
  - Need an additional 15 ROEs (102 locations) to complete sampling
- Begin data review this month. Completion pending receipt of ROEs and samples, tentative November 2026
- Design and remediation to follow



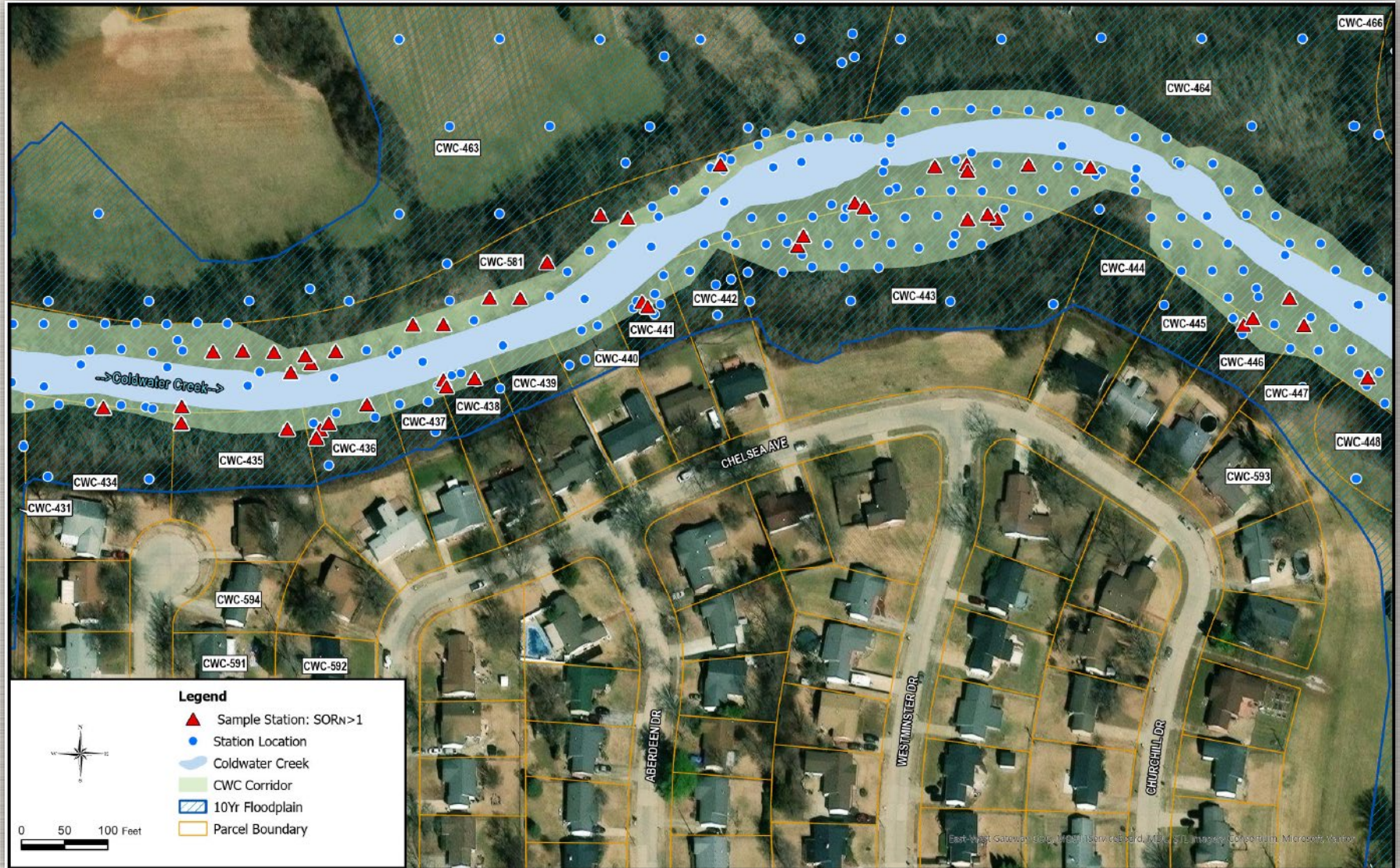
U.S. ARMY



US Army Corps  
of Engineers®



# Wedgwood Subdivision Sampling Figure 1 of 4



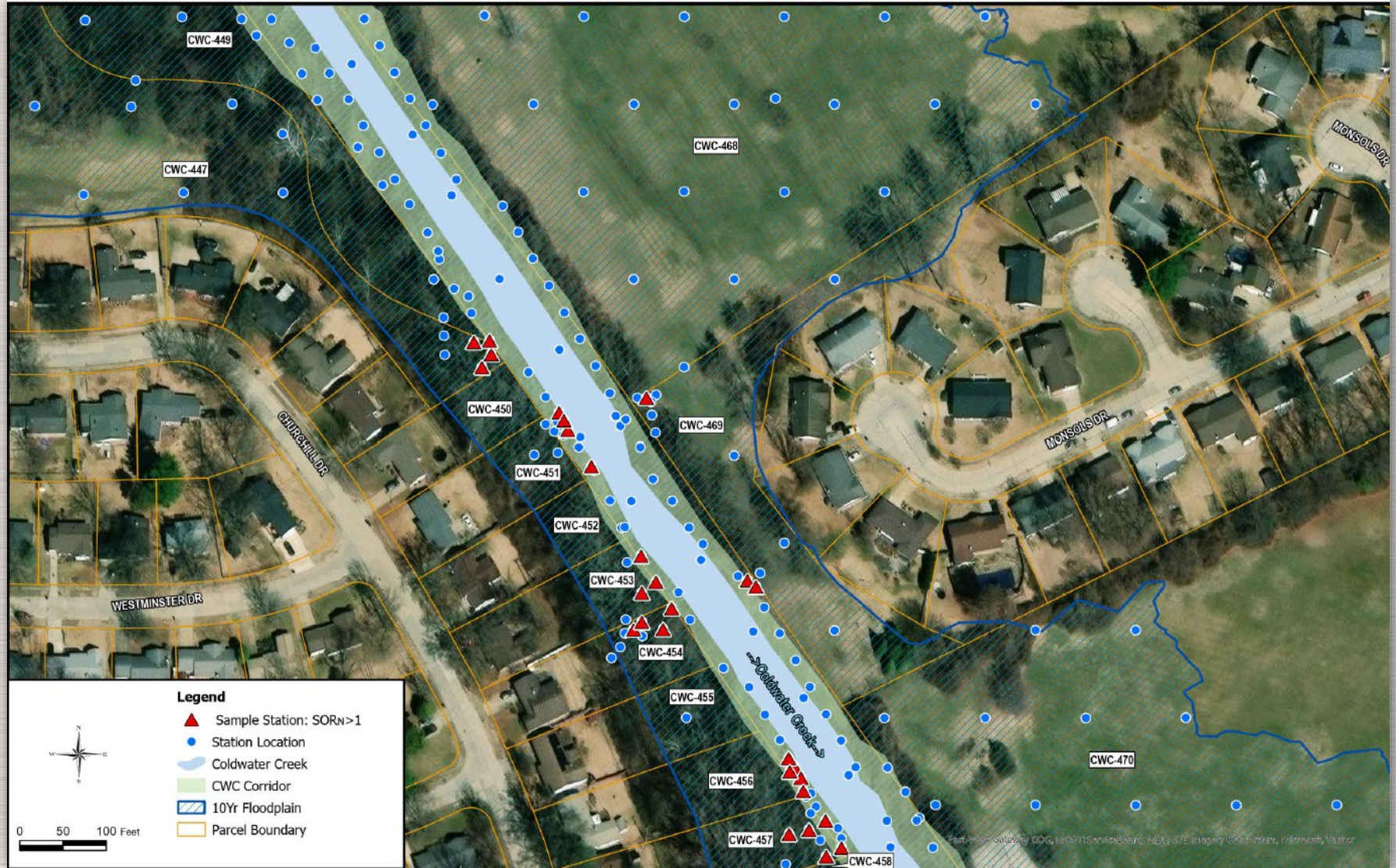
US Army Corps  
of Engineers®





# Wedgwood Subdivision Sampling

## Figure 3 of 4

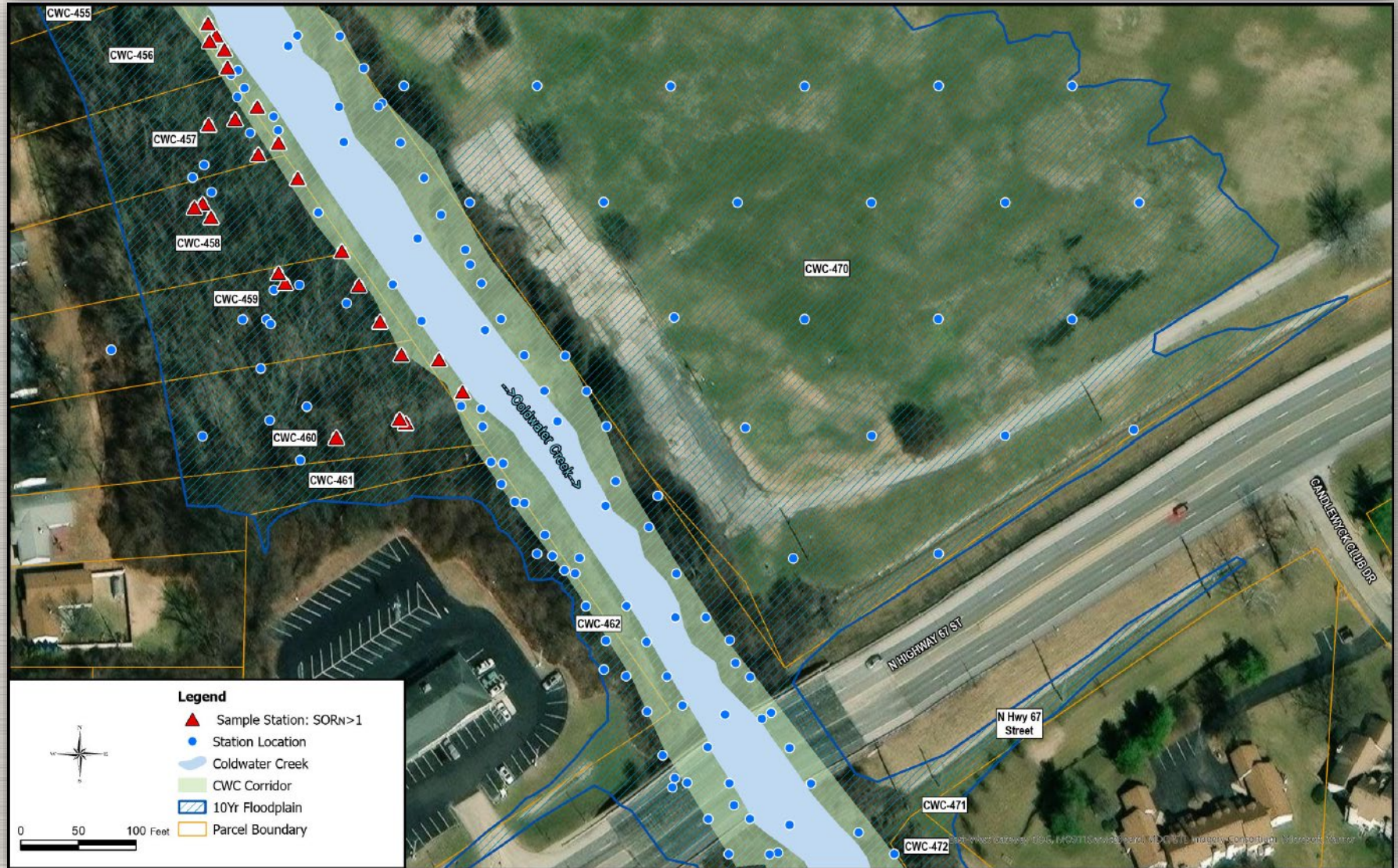


US Army Corps  
of Engineers®



# Wedgwood Subdivision Sampling

## Figure 4 of 4

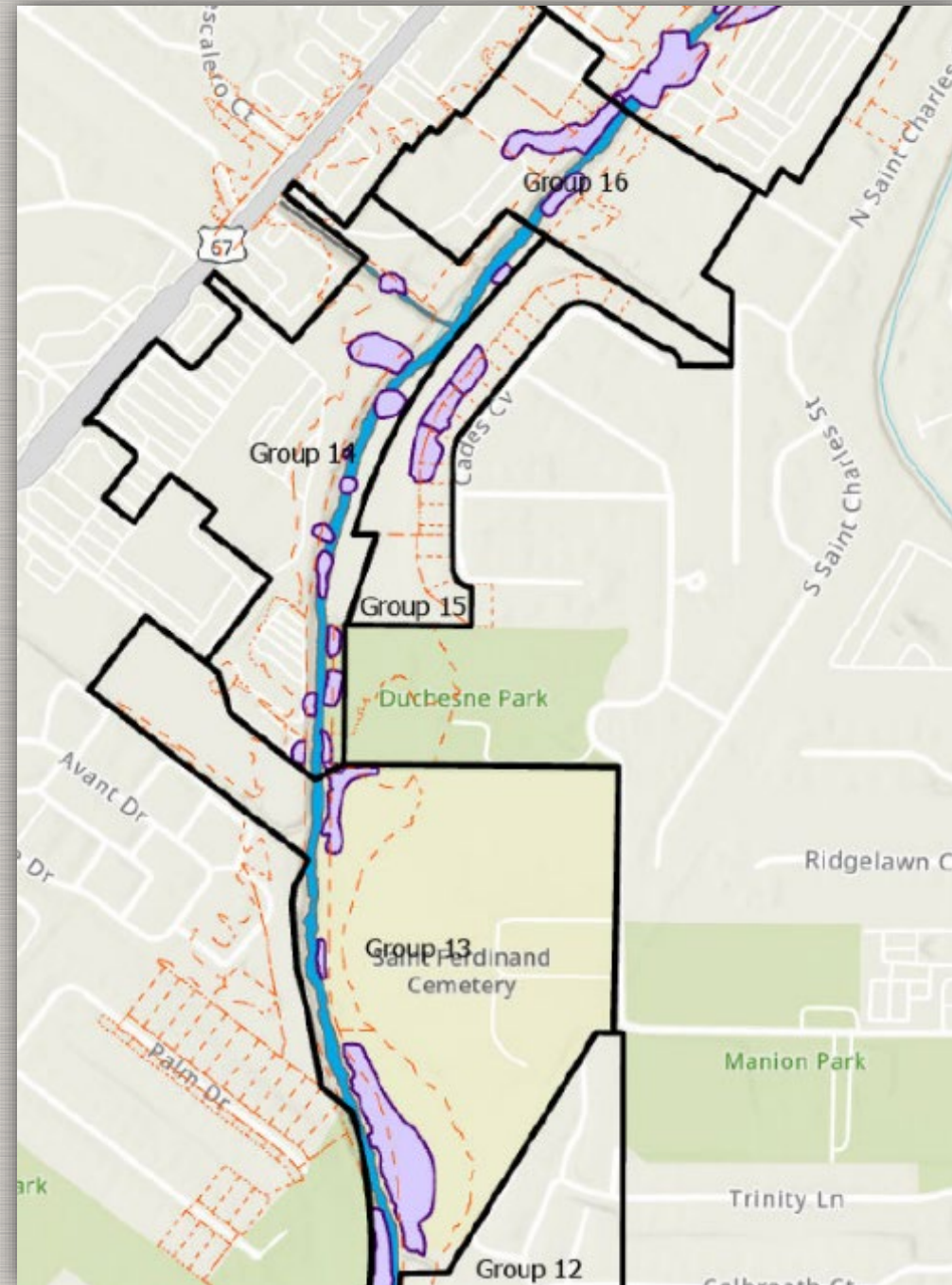
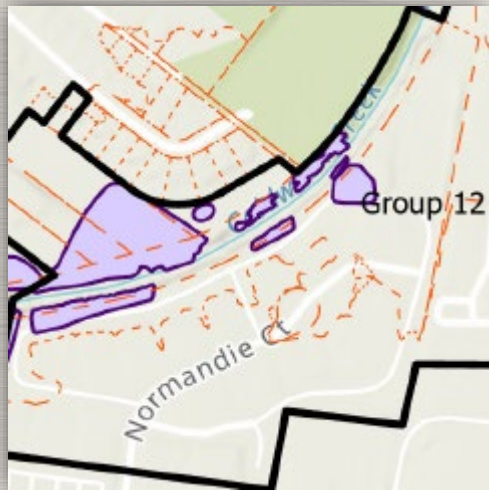


US Army Corps  
of Engineers®



# FY 2027 Remediation Schedule

- Future remediations will follow Cades Cove completion to utilize the current temporary haul route and laydown areas.
  - Group 14 – Creek area adjacent to Duchesne Park
  - Group 16 – Area just north of Cades Cove
  - Group 13 – Archdiocese Property
- Following remediation at Group 12 West
  - Group 12 East – Former French Quarter Apartments area
  - Complete Group 1 remediation that was stopped to move to Cades Cove.



U.S. ARMY



US Army Corps  
of Engineers®



# CONTACT US

- **Website**

FUSRAP <https://www.mvs.usace.army.mil/Missions/FUSRAP/>

St. Louis District <https://www.mvs.usace.army.mil/>

- **Email** [STLFUSRAP@usace.army.mil](mailto:STLFUSRAP@usace.army.mil)

- **General Information**

FUSRAP Office 314-260-3905

Public Affairs Office 314-331-8000

- **Administrative Record**

Electronic Reading Room

<https://www.mvs.usace.army.mil/Missions/FUSRAP/Reading-Room/>

FUSRAP Office, 114 James S. McDonnell Blvd., Hazelwood, MO

Hours: Weekdays from 8 a.m. to 3 p.m. – by appointment



U.S. ARMY



US Army Corps  
of Engineers®



**QUESTIONS/COMMENTS?**



**U.S. ARMY**



**US Army Corps  
of Engineers®**